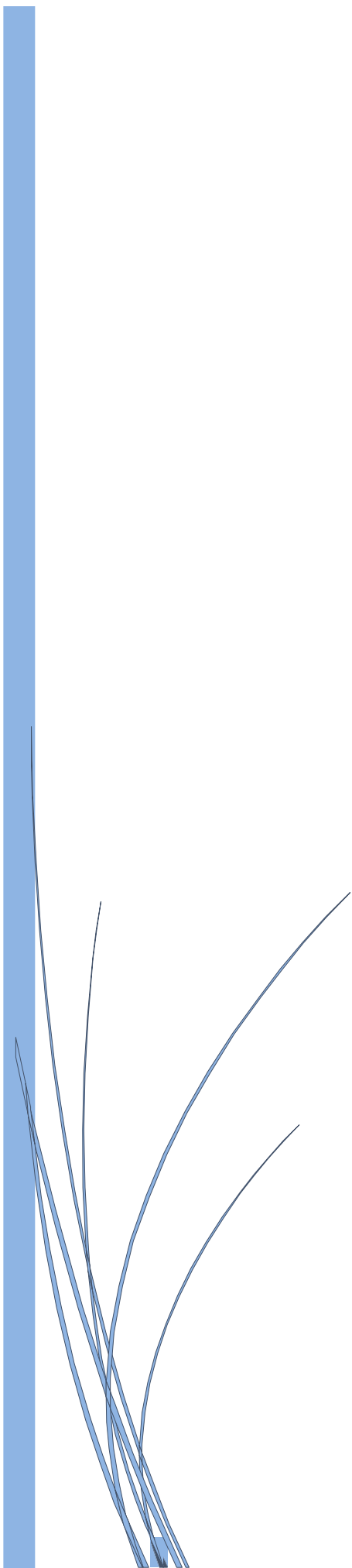


VOLUME 03

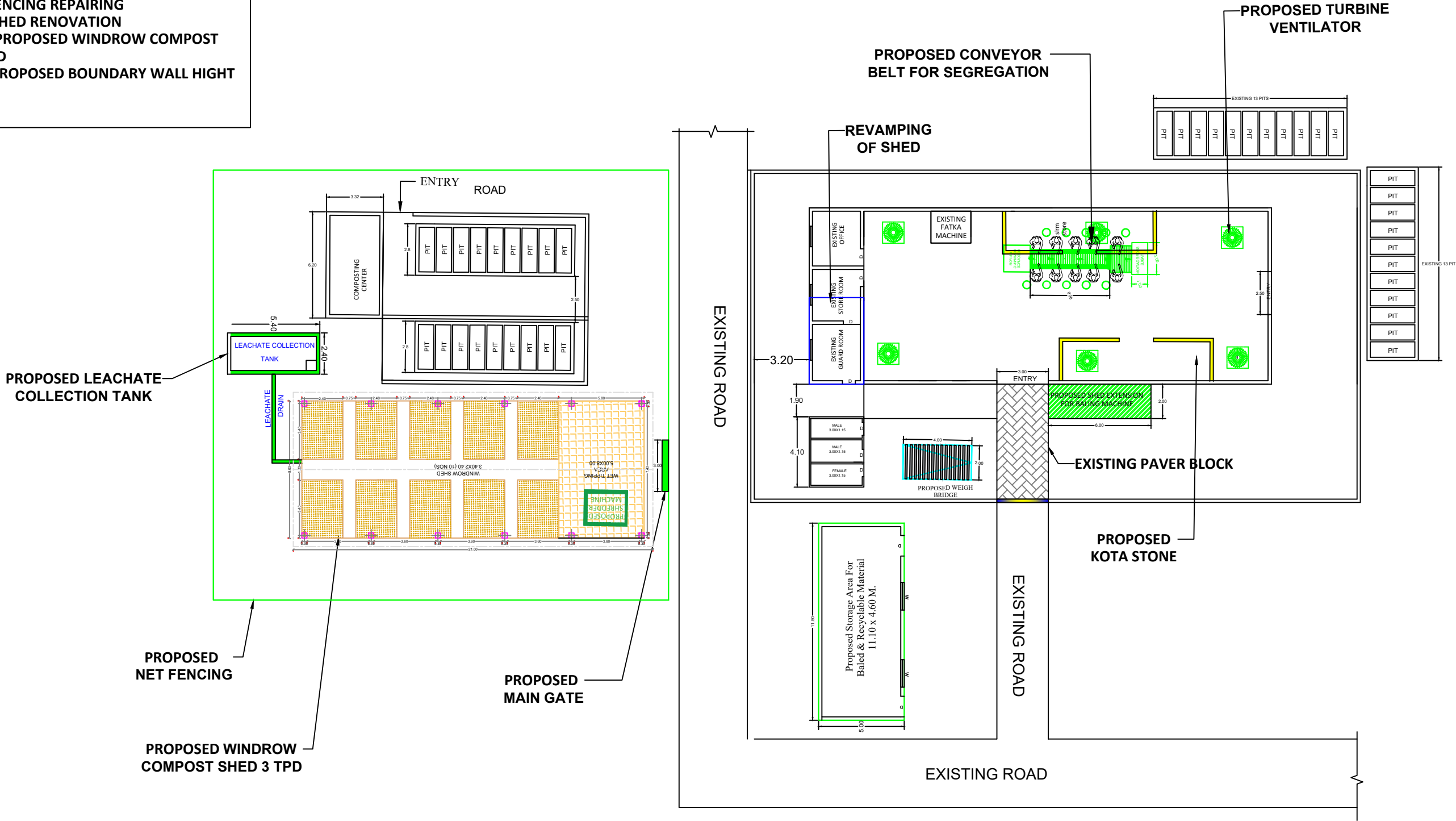




DRAWING & SECTION FOR COMPOST PLANT & SLRM- WARD NO. - 04, BYPASS ROAD, BASNA (C.G.)

BASIC REQUIRMENT

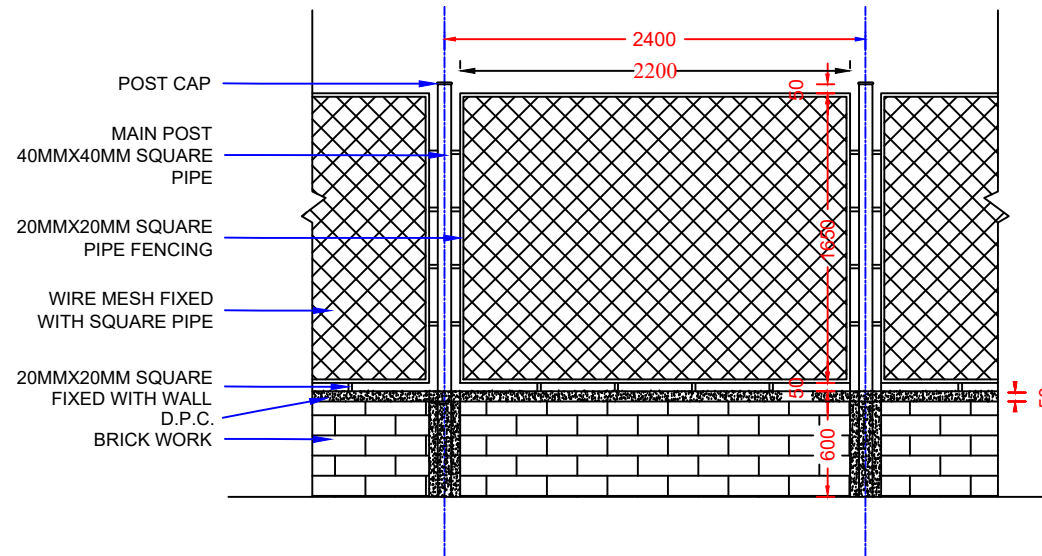
- 1. PROPOSED CONVEYOR BELT
- 2. PAINTING WORK(WALL & STEEL MATERIAL
- 3. PROPOSED TURBINE VENTILATOR
- 4. PROPOSED WEIGH BRIDGE
- 5. TOILET REVAMPING
- 6. PROPOSED STORAGE AREA
- 7. PROPOSED INTERNAL KOTA STONE
- 8. SHED EXTENTION
- 9. FENCING REPAIRING
- 10.SHED RENOVATION
- 11. PROPOSED WINDROW COMPOST SHED
- 12.PROPOSED BOUNDARY WALL HIGHT



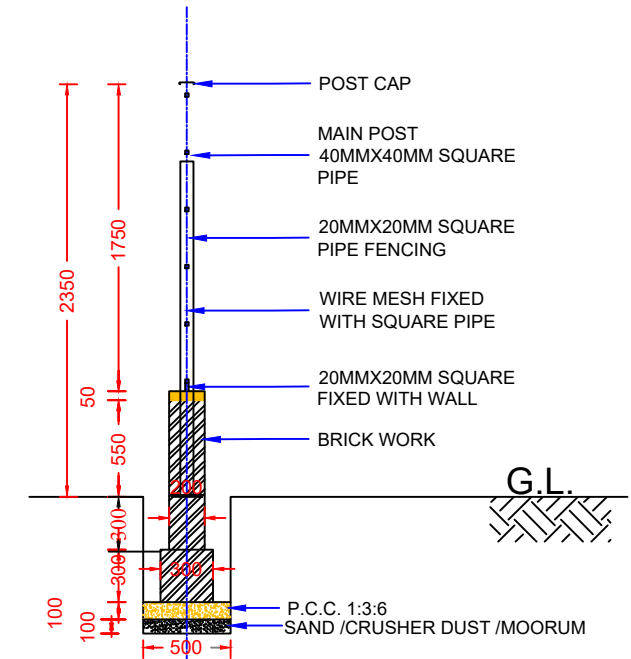
TITLE :-
LAY - OUT PLAN AT -SLRM
CENTER, WARD NO -04, BYPASS ROAD
BASNA (C.G.)

LEGEND :-	
	EXISTING PLAN
	PROPOSED PLAN
	UPGRADATION
	PROPOSED INFRASTRUCTURE UNDER OTHER SCHEME
	DEMOLITION AREA

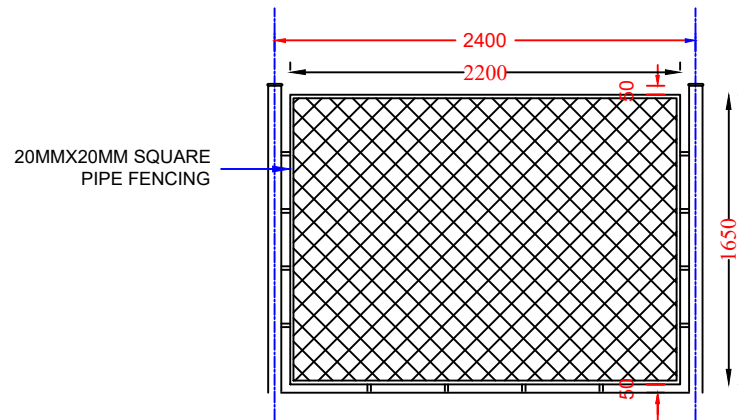
ARCHITECT & ENGINEER
NAMAN BHATT & ASSOCIATES
BESIDE MAINTENANCE OFFICE
SECTOR 10 BHILAI, DURG (C.G)
PIN - 491001
PHONE - 07882216777,9630868978
SURVEYOR



TYPICAL ELEVATION OF FENCING



CROSS SECTION OF CHAIN LINK FENCING

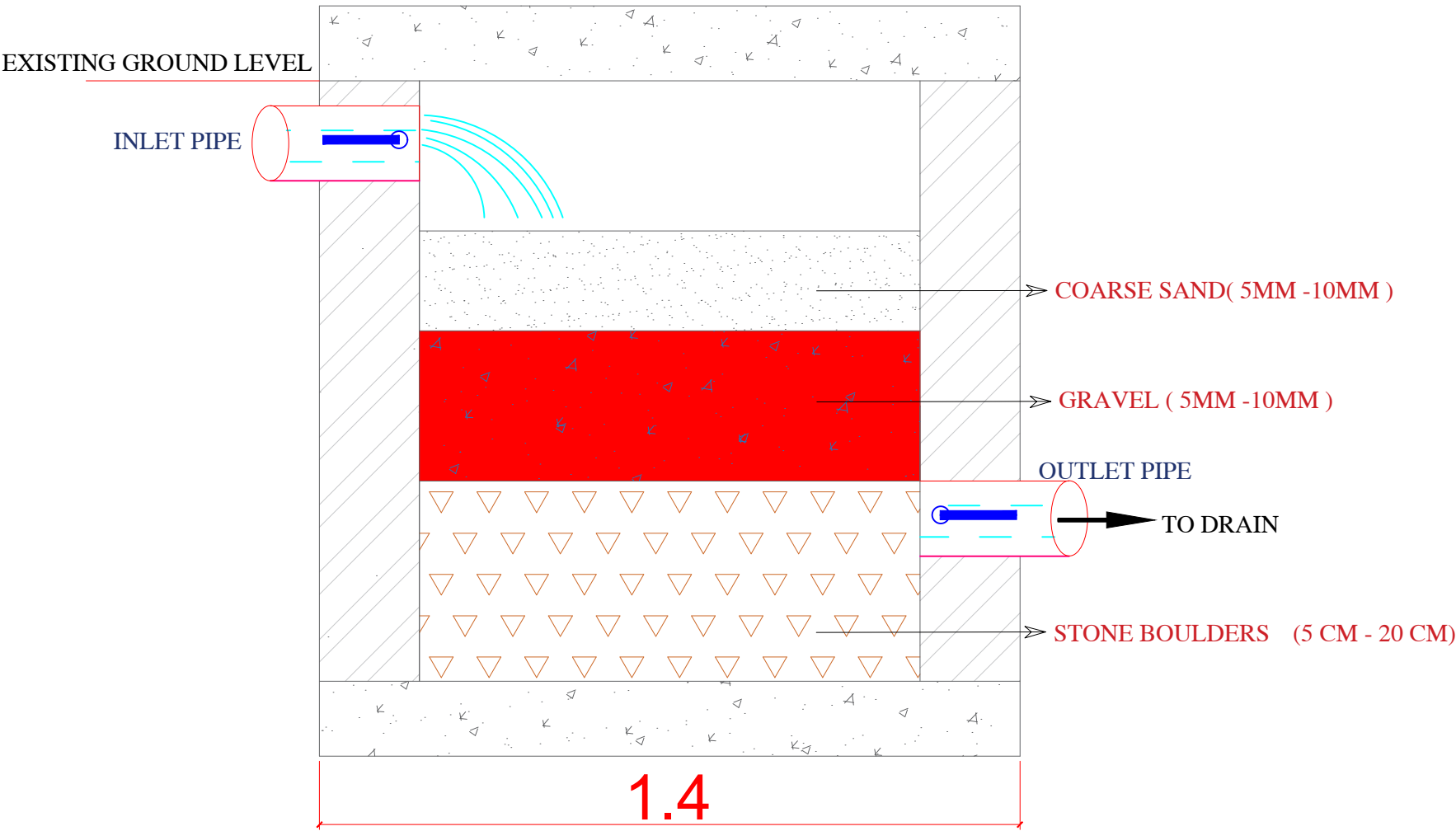


TYPICAL PLAN OF FENCING

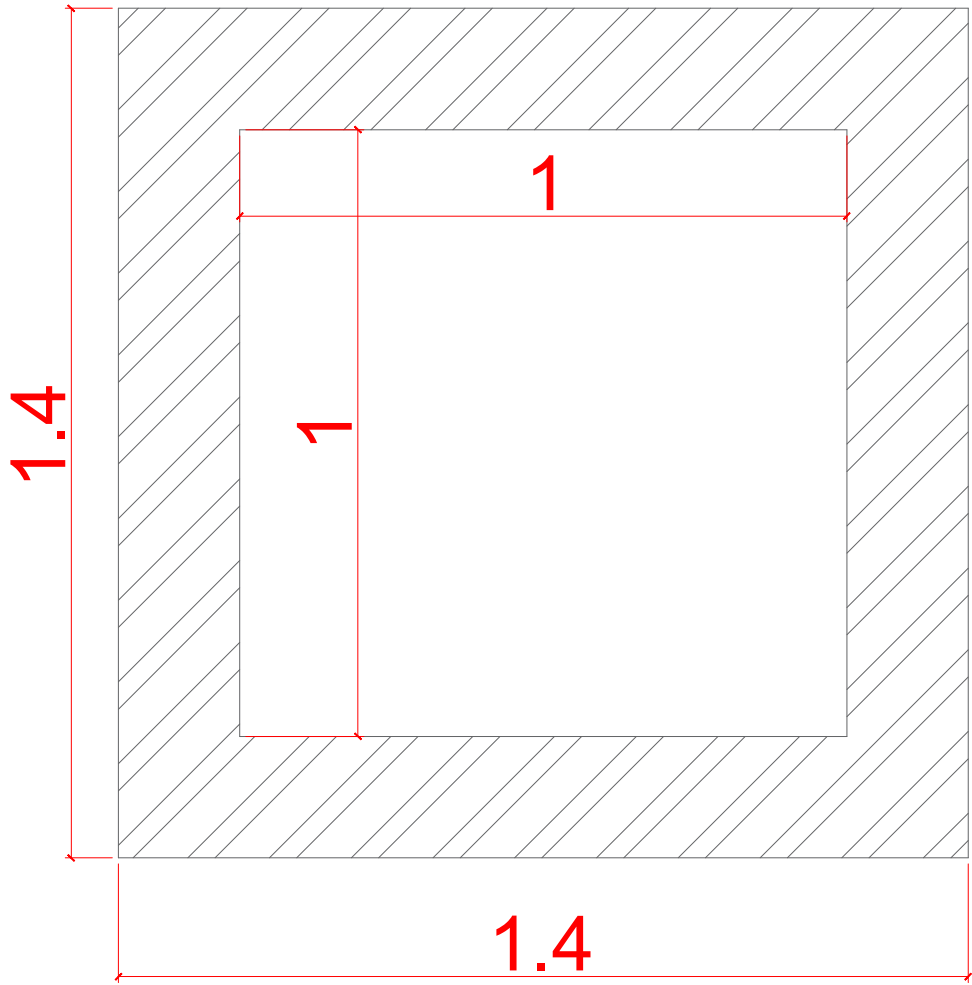
PROJECT:-

SECTION DESIGN OF FENCING

ARCHITECT & ENGINEER
NAMAN BHATT & ASSOCIATES
BESIDE MAINTENANCE OFFICE
SECTOR 10 BHILAI, DURG (C.G)
PIN - 491001
PHONE - 07882216777,9630868978
SURVEYOR

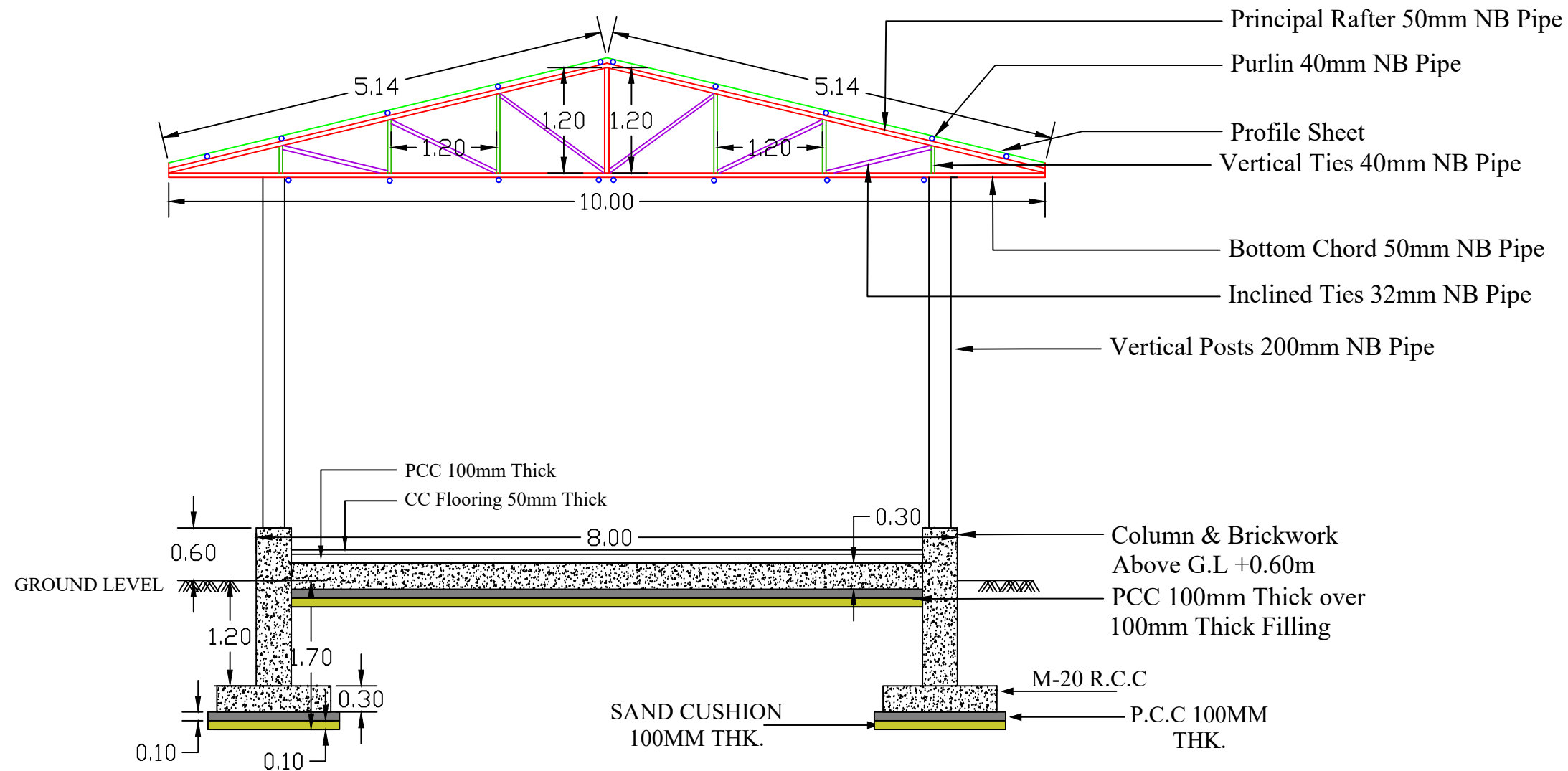
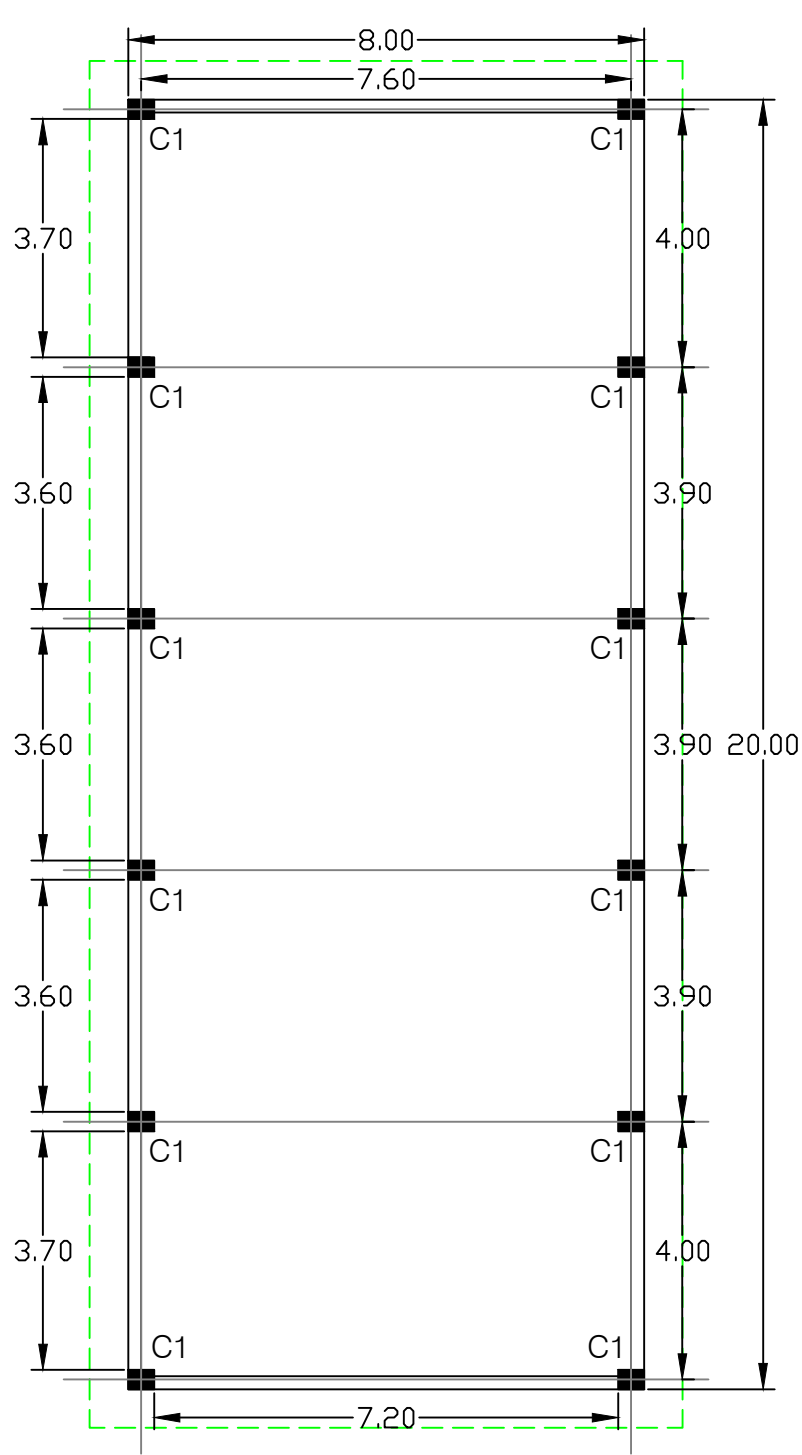


SECTION OF RAIN WATER HARVESTING

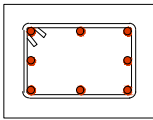
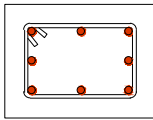


PLAN OF RAIN WATER HARVESTING

<p><u>TITLE :-</u></p> <p>RAIN WATER HARVESTING</p>	<p>ARCHITECT & ENGINEER</p> <p>NAMAN BHATT & ASSOCIATES</p> <p>BESIDE MAINTENANCE OFFICE</p> <p>SECTOR 10 BHILAI, DURG (C.G)</p> <p>PIN - 491001</p> <p>PHONE - 07882216777,9630868978</p> <p>SURVEYOR</p>
---	--



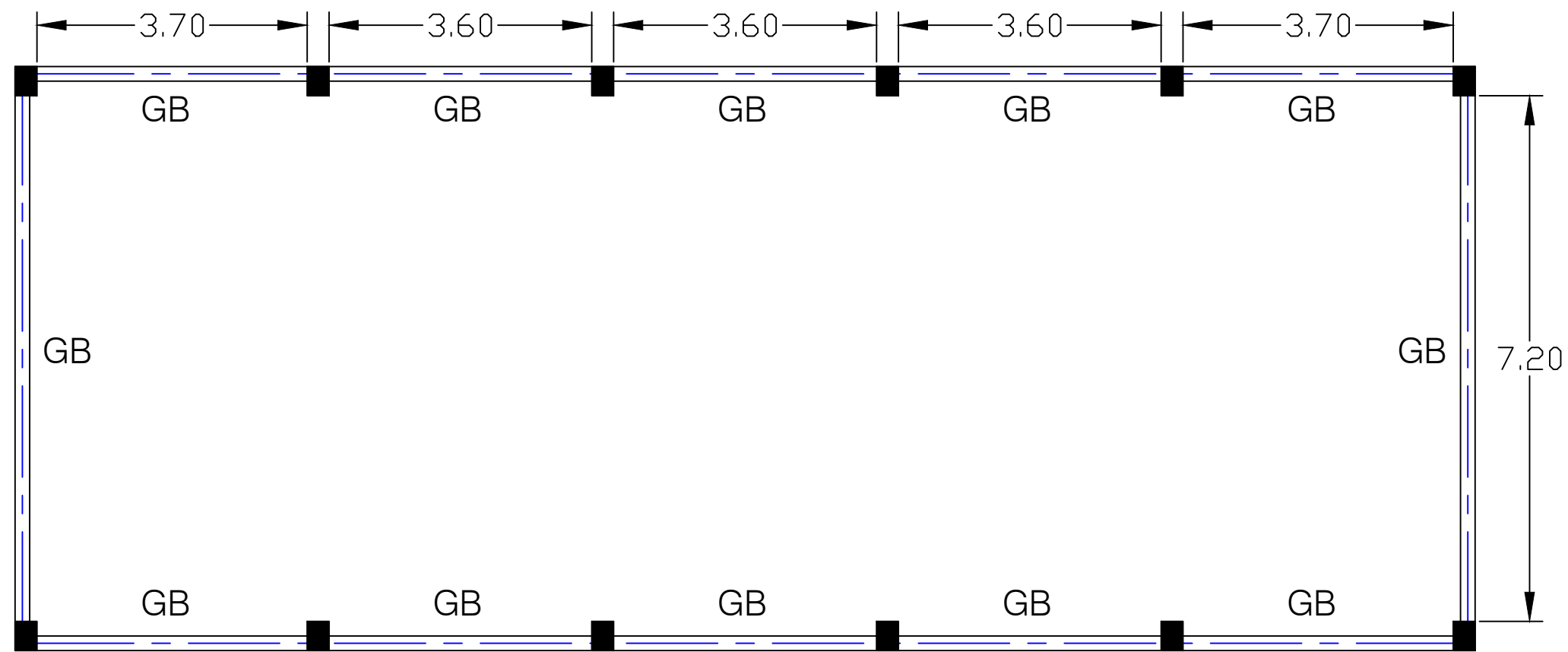
COLUMN DETAILS

COL. TYPE	COLUMN SECTION	
	UPTO PLINTH	ABOVE PLINTH
C1 300x400	 <p>MAIN BARS: 8 Nos Ø12mm Stirrups: Ø 8mm 150 mm C/C</p>	 <p>MAIN BARS: 8 Nos Ø12mm Stirrups: Ø 8mm 150 mm C/C</p>

TITLE :-

**PLAN & COLUMN LAYOUT DETAILS
OF 3 TPD WINDROW COMPOST
PLANT**

**ARCHITECT & ENGINEER
NAMAN BHATT & ASSOCIATES
BESIDE MAINTENANCE OFFICE
SECTOR 10 BHILAI, DURG (C.G)
PIN - 491001
PHONE - 07882216777,9630868978
SURVEYOR**



GROUND BEAM SCHEDULE (M20:Fe500) (TYPICAL GROUND BEAM DETAILS) SEE FIG.-2

BEAM NUMBERS	SIZE		BOTTOM REINFORCEMENT		TOP REINFORCEMENT			SHEAR STIRRUPS		
	B	D	BOTTOM R/F (THRU.)	BOTTOM R/F EXTRA AT MID SPAN	TOP R/F (THRU.)	TOP EXTRA R/F AT LEFT SUPPORT	TOP EXTRA R/F AT RIGHT SUPPORT	LEFT	MID SPAN	RIGHT
GB	200	300	2-T12	1-T12	2-T12	1-T12	1-T12	2L-T8@150	2L-T8@150	2L-T8@150

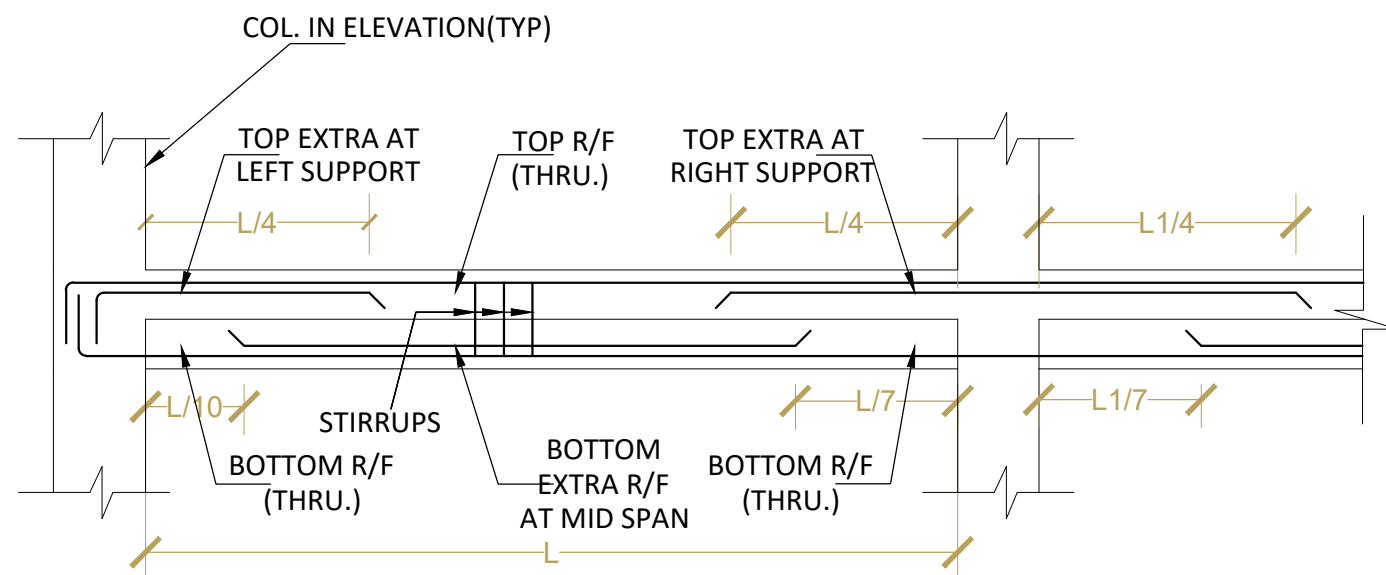
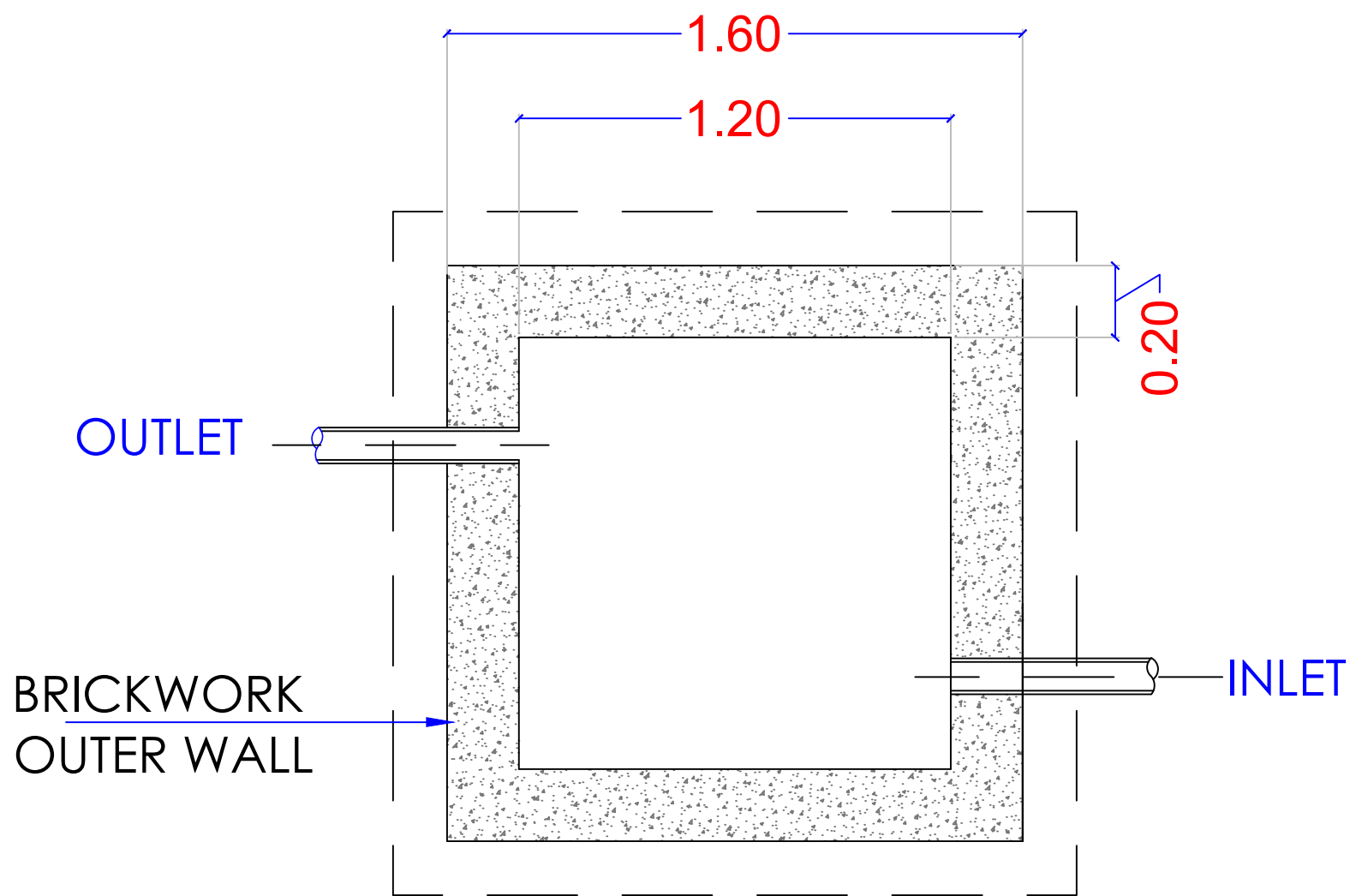


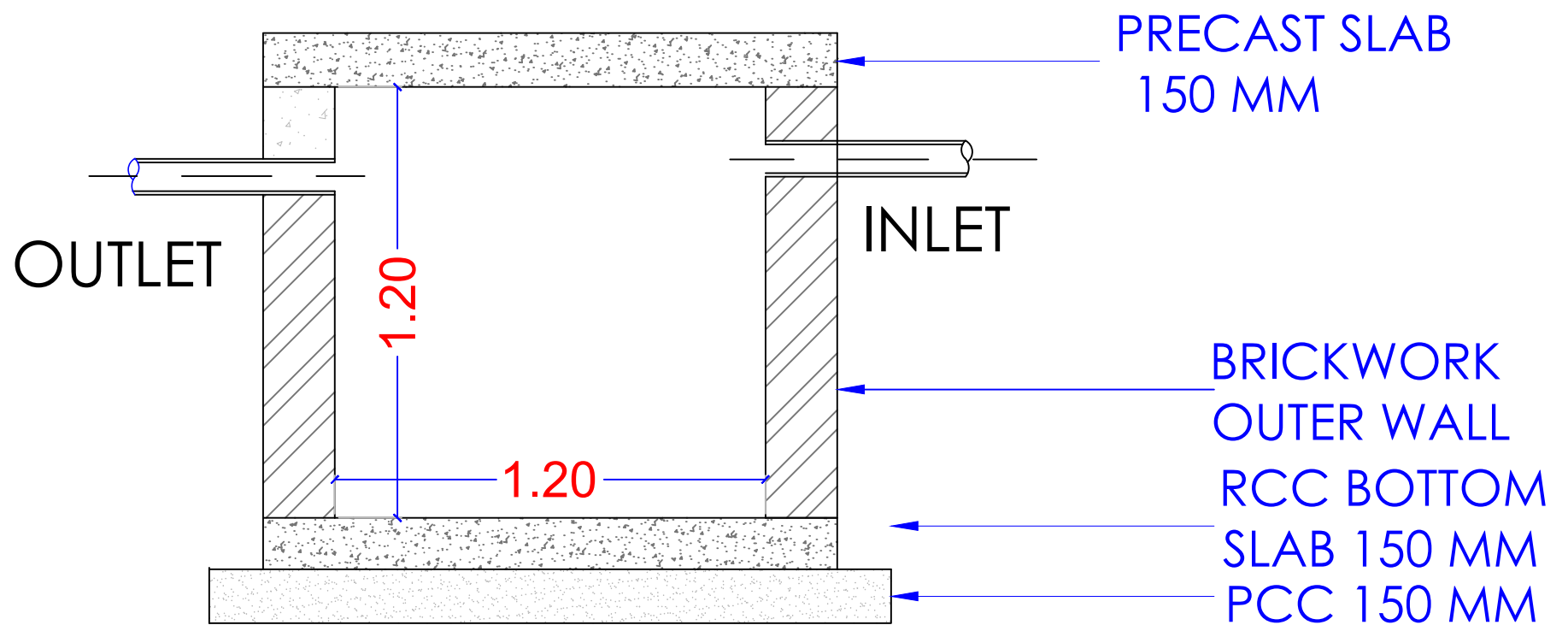
FIG.2:TYPICAL DETAIL OF BEAM

BELOW GROUND BEAM DETAILS

ARCHITECT & ENGINEER
 NAMAN BHATT & ASSOCIATES
 BESIDE MAINTENANCE OFFICE
 SECTOR 10 BHILAI, DURG (C.G)
 PIN - 491001
 PHONE - 07882216777,9630868978
 SURVEYOR



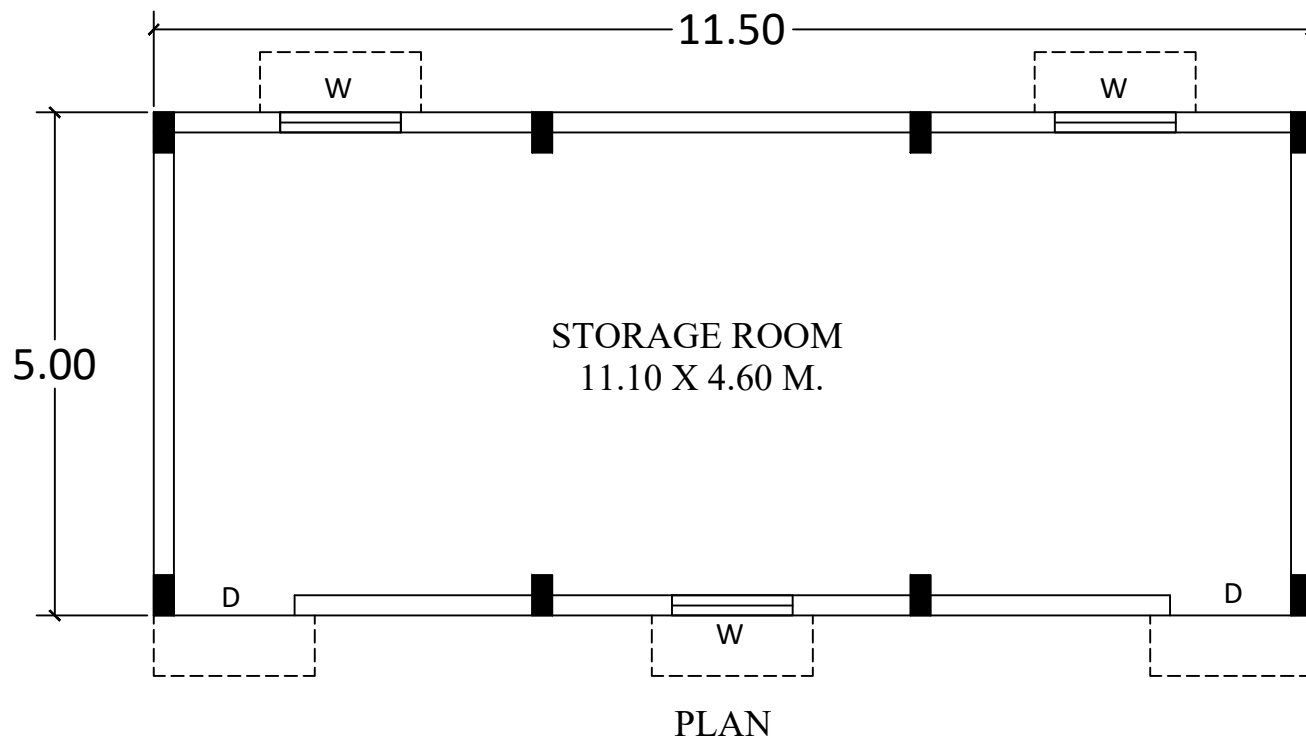
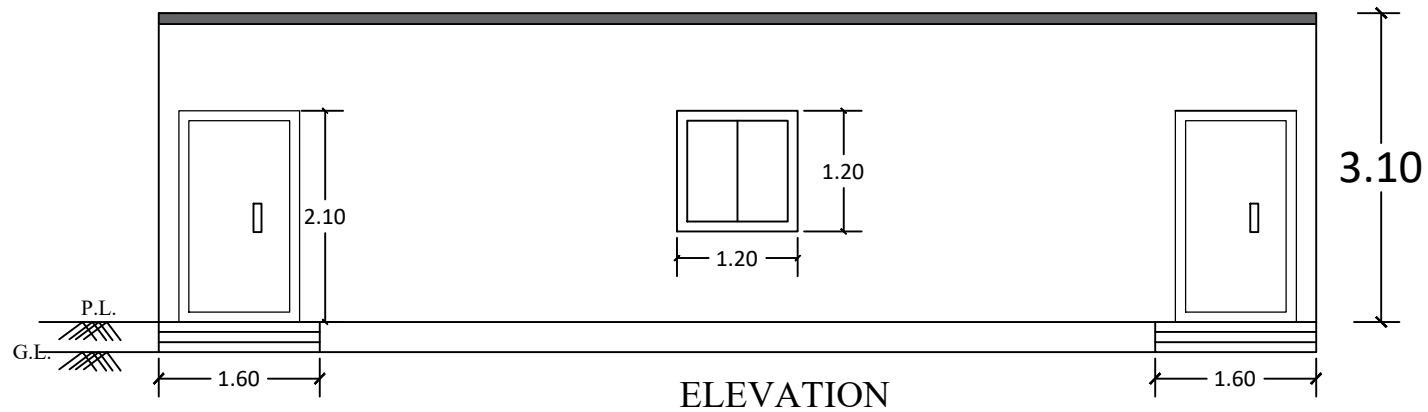
LEACHATE TANK PLAN
1.20 X 1.20 X 1.20 M



TITLE :-

LEACHATE COLLECTION
TANK

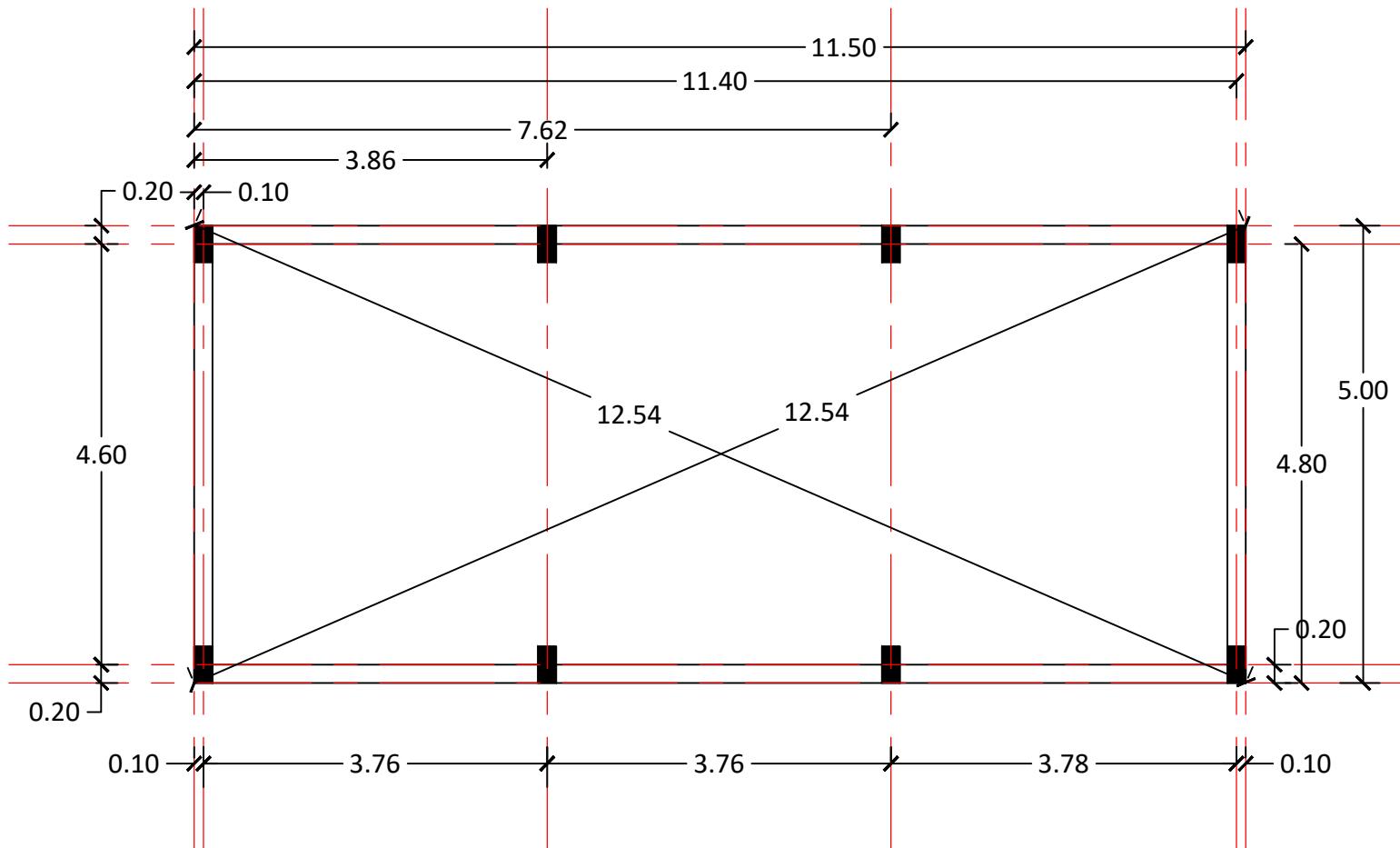
ARCHITECT & ENGINEER
NAMAN BHATT & ASSOCIATES
BESIDE MAINTENANCE OFFICE
SECTOR 10 BHILAI, DURG (C.G)
PIN - 491001
PHONE - 07882216777,9630868978
SURVEYOR



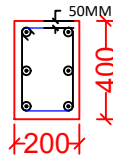
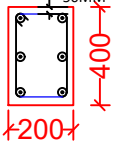
PROJECT :-
Storage Area for Beled & Recyclable Material

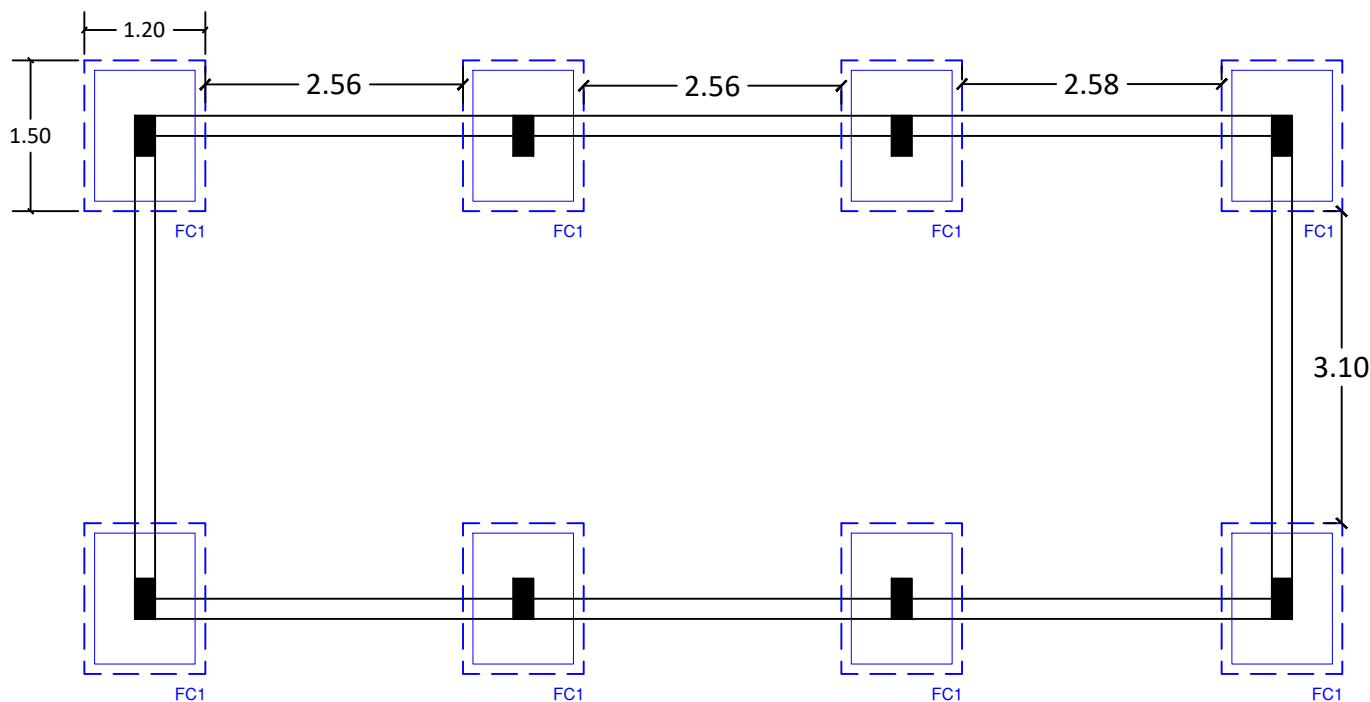
SCHEDULE
DOOR - 1.20X2.10 M. WINDOW - 1.20X1.20 M.

ARCHITECT & ENGINEER
NAMAN BHATT & ASSOCIATES
BESIDE MAINTENANCE OFFICE
SECTOR 10 BHILAI, DURG (C.G)
PIN - 491001
PHONE - 07882216777,9630868978
SURVEYOR

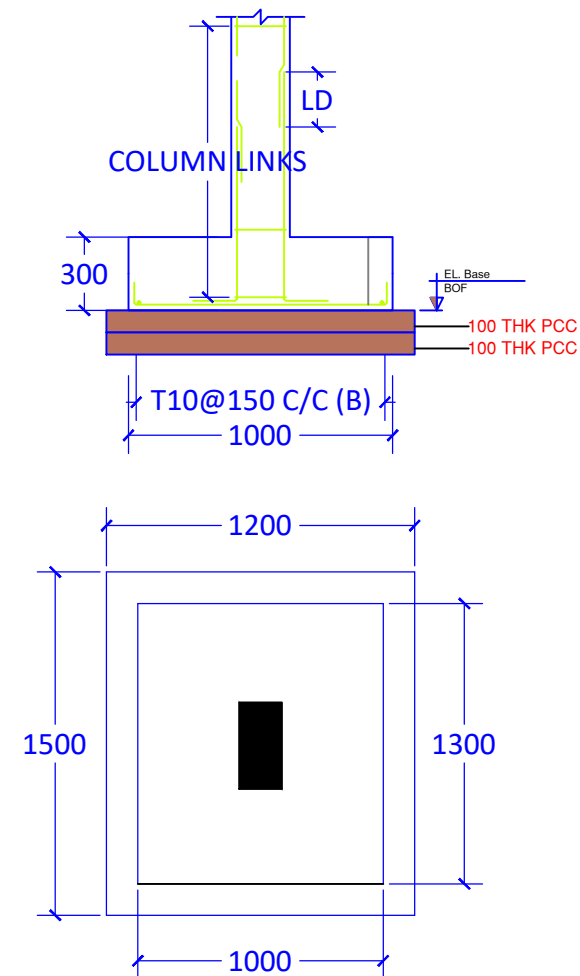


CENTRE LINE PLAN

UP TO GROUND FLOOR	M20 : Fe500 
	LINKS
	T8@150c/c
	
COLUMN SIZE	200X400
COLUMN MARKED	C1



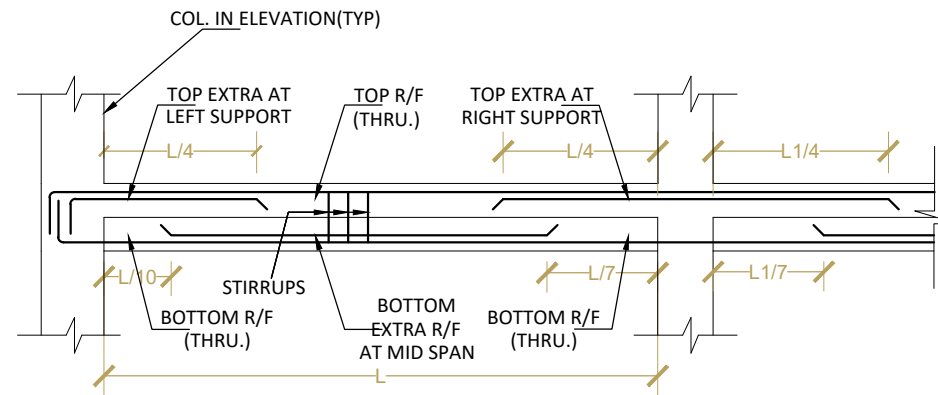
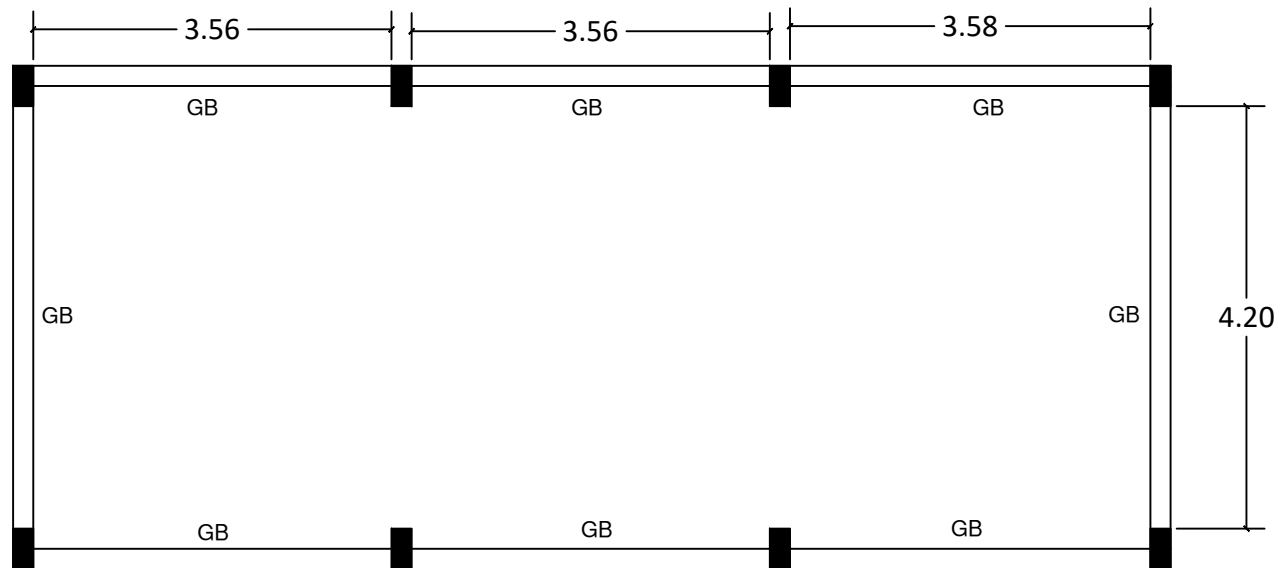
FOOTING DETAILS



COLUMN FOOTING SECTION 1-1
DETAIL OF FOOTING FC1

FOOTING SCHEDULE (M20:Fe500)

FOOTING NUMBERS	EXCAVATION SIZE			FOOTING DIMENSION			FOOTING REINFORCEMENT			
	L	B	D/H	L	B	D	BOTTOM		TOP	
							ALONG B	ALONG L	ALONG B	ALONG L
FC1	1.20	1.50	1.50	1.00	1.30	300	T10@150 C/C	T10@150 C/C	--	--



BEAM SCHEDULE (M20:Fe500) (TYPICAL GROUND BEAM DETAILS) SEE FIG.-2

BEAM NUMBERS	SIZE		BOTTOM REINFORCEMENT		TOP REINFORCEMENT			SHEAR STIRRUPS		
	B	D	BOTTOM R/F (THRU.)	BOTTOM R/F EXTRA AT MID SPAN	TOP R/F (THRU.)	TOP EXTRA R/F AT LEFT SUPPORT	TOP EXTRA R/F AT RIGHT SUPPORT	LEFT	MID SPAN	RIGHT
GB	200	300	2-T12	1-T12	2-T12	1-T12	1-T12	2L-T8@150	2L-T8@150	2L-T8@150

GROUND BEAM DETAILS

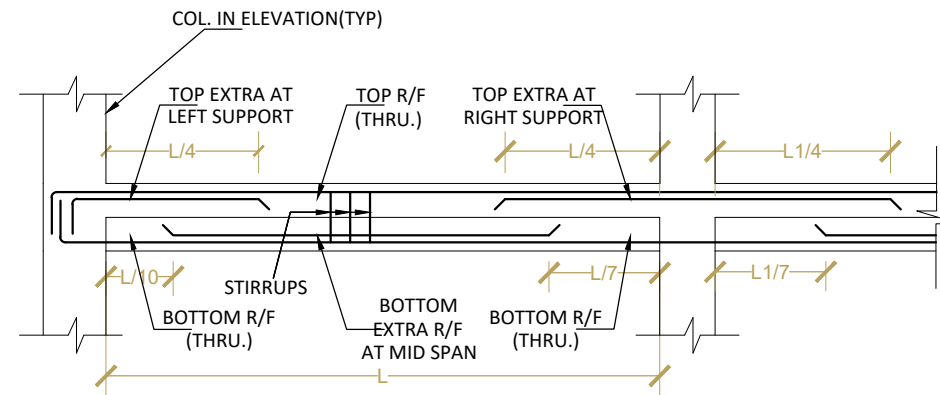
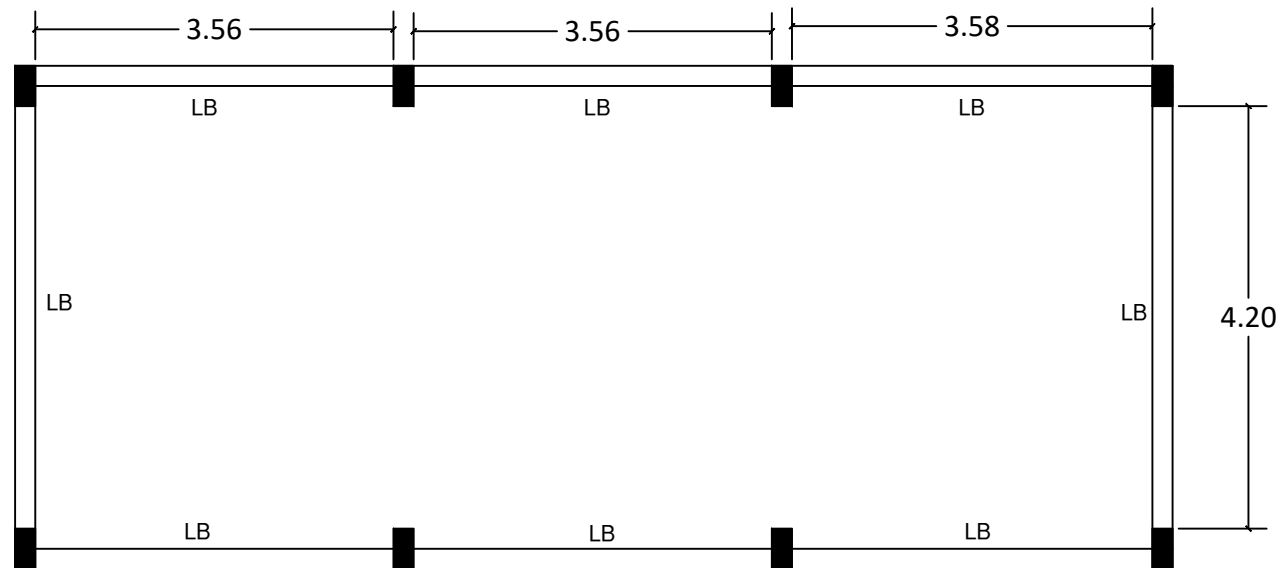


FIG.2:TYPICAL DETAIL OF BEAM

BEAM SCHEDULE (M20:Fe500) (TYPICAL LINTEL BEAM DETAILS) SEE FIG.-2

BEAM NUMBERS	SIZE		BOTTOM REINFORCEMENT		TOP REINFORCEMENT			SHEAR STIRRUPS		
	B	D	BOTTOM R/F (THRU.)	BOTTOM R/F EXTRA AT MID SPAN	TOP R/F (THRU.)	TOP EXTRA R/F AT LEFT SUPPORT	TOP EXTRA R/F AT RIGHT SUPPORT	LEFT	MID SPAN	RIGHT
LB	0.20	0.15	2-T12	-	2-T12	-	-	2L-T8@150	2L-T8@150	2L-T8@150

LINTEL BEAM DETAILS

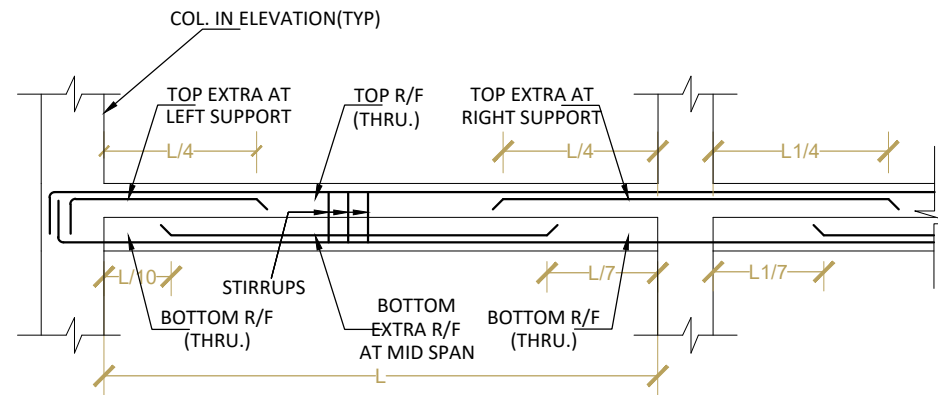
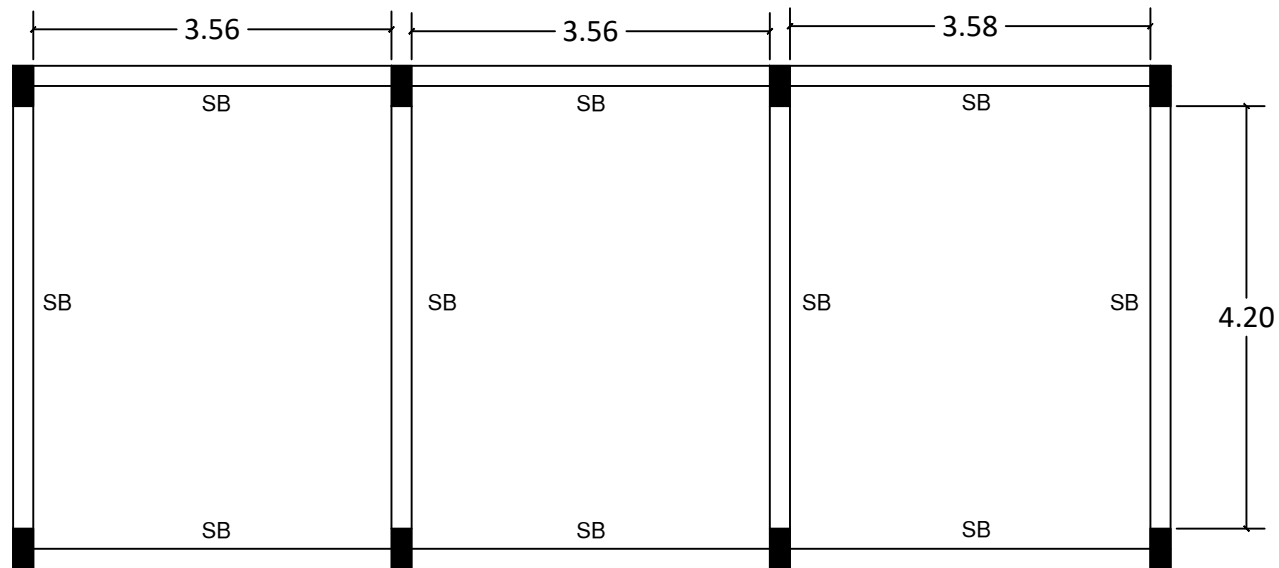
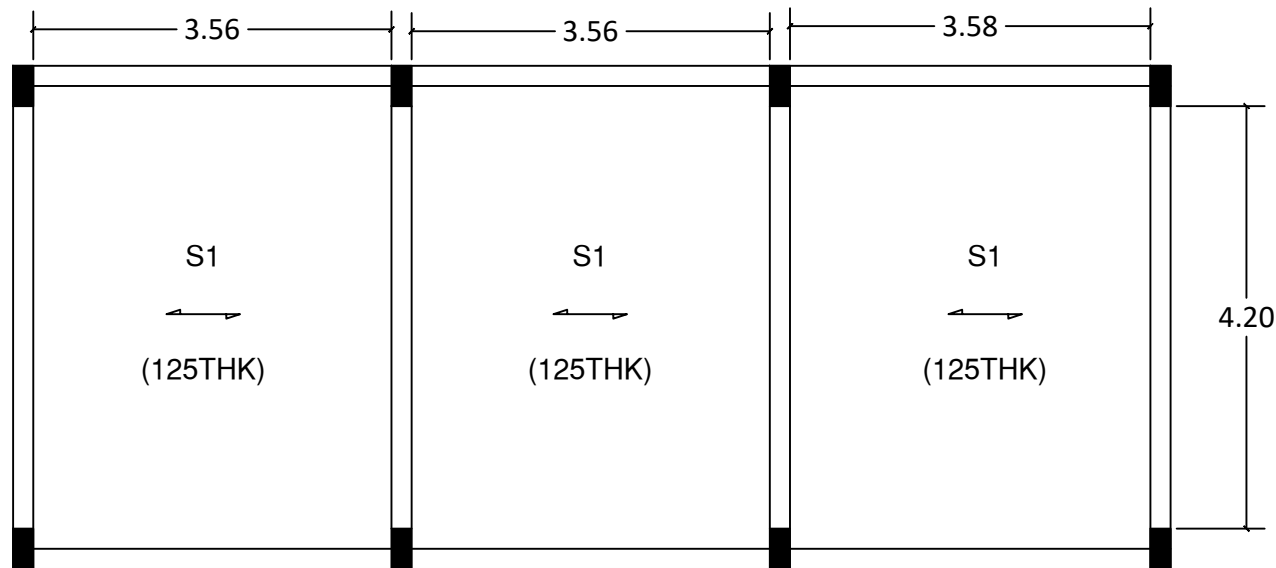


FIG.2:TYPICAL DETAIL OF BEAM

BEAM SCHEDULE (M20:Fe500) (TYPICAL SLAB BEAM DETAILS) SEE FIG.-2

BEAM NUMBERS	SIZE		BOTTOM REINFORCEMENT		TOP REINFORCEMENT			SHEAR STIRRUPS		
	B	D	BOTTOM R/F (THRU.)	BOTTOM R/F EXTRA AT MID SPAN	TOP R/F (THRU.)	TOP EXTRA R/F AT LEFT SUPPORT	TOP EXTRA R/F AT RIGHT SUPPORT	LEFT	MID SPAN	RIGHT
SB	0.20	0.40	2-T16	1-T16	2-T16	1-T12	2-T12	2L-T8@150	2L-T8@150	2L-T8@150

SLAB BEAM DETAILS



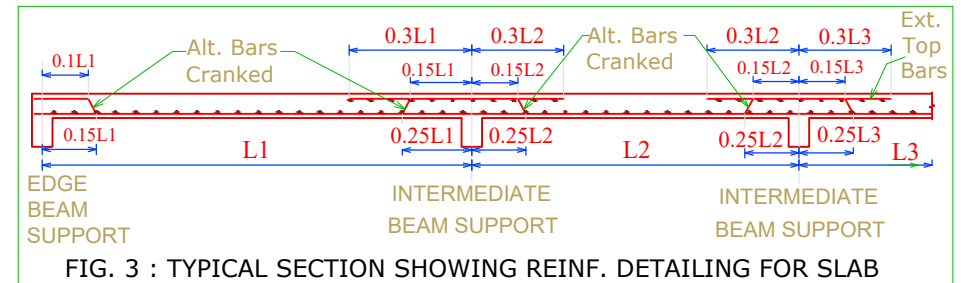
NOTE : [1] IN SLABS, BENT UP BARS (OR EXTRA TOP BARS) SHALL BE EXTENDED UP TO 0.3L IN ADJACENT SPAN OVER CONTINUOUS SUPPORT.

[2] AT MID-SPAN LOCATIONS, BARS NEAR THE BOTTOM FACE SHOULD BE PLACED SUCH THAT THE BARS ALONG SHORT SPAN ARE BELOW THE BARS ALONG LONG SPAN.

[3] AT BEAM SUPPORT LOCATIONS, BARS NEAR THE TOP FACE SHOULD BE PLACED SUCH THAT THE BARS ALONG SHORT SPAN ARE ABOVE THE BARS ALONG LONG SPAN.

[4] PROVIDE TORSION REINFORCEMENT, AS PER I.S.CODAL PROVISION (IS:456:2000).

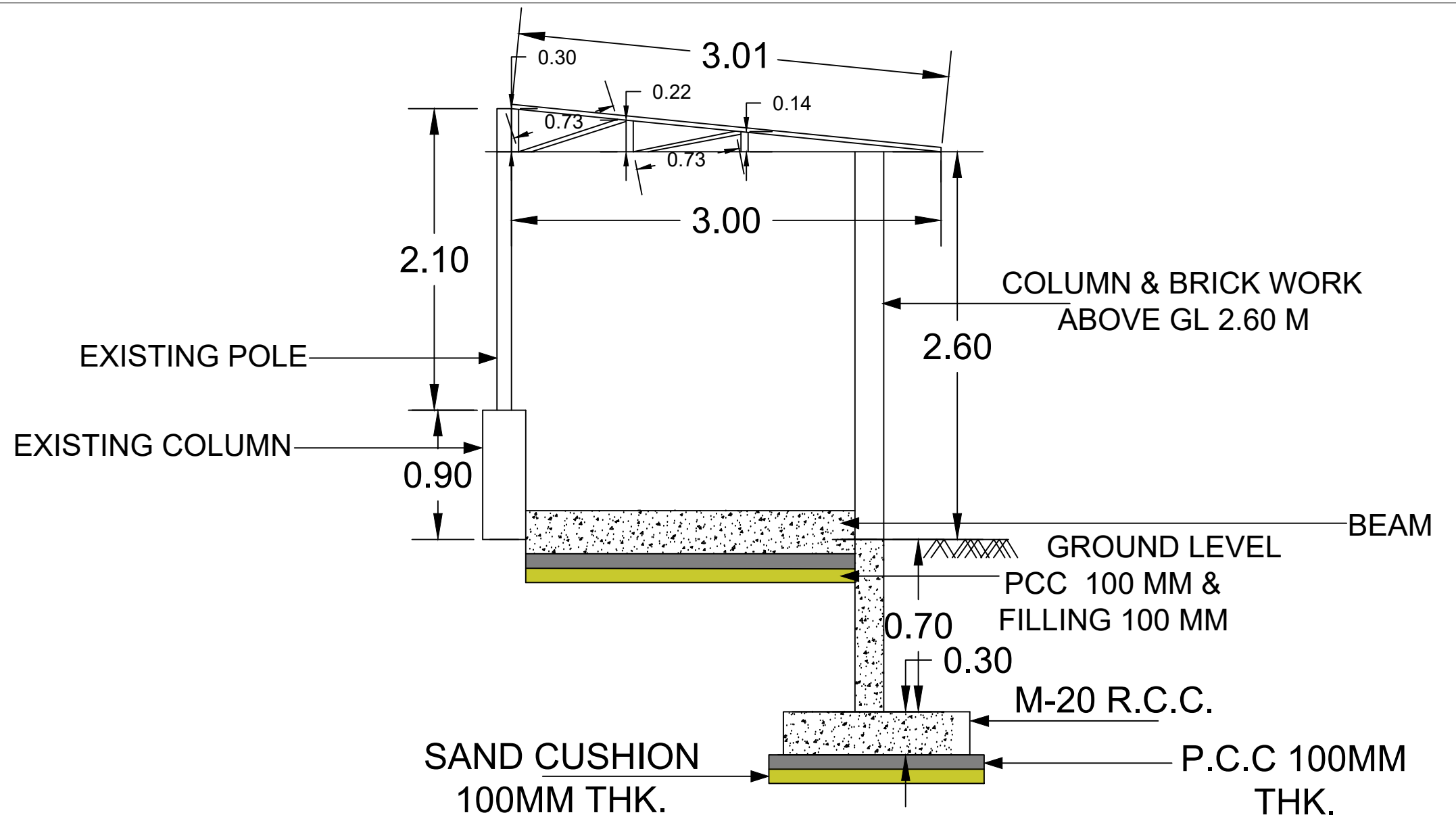
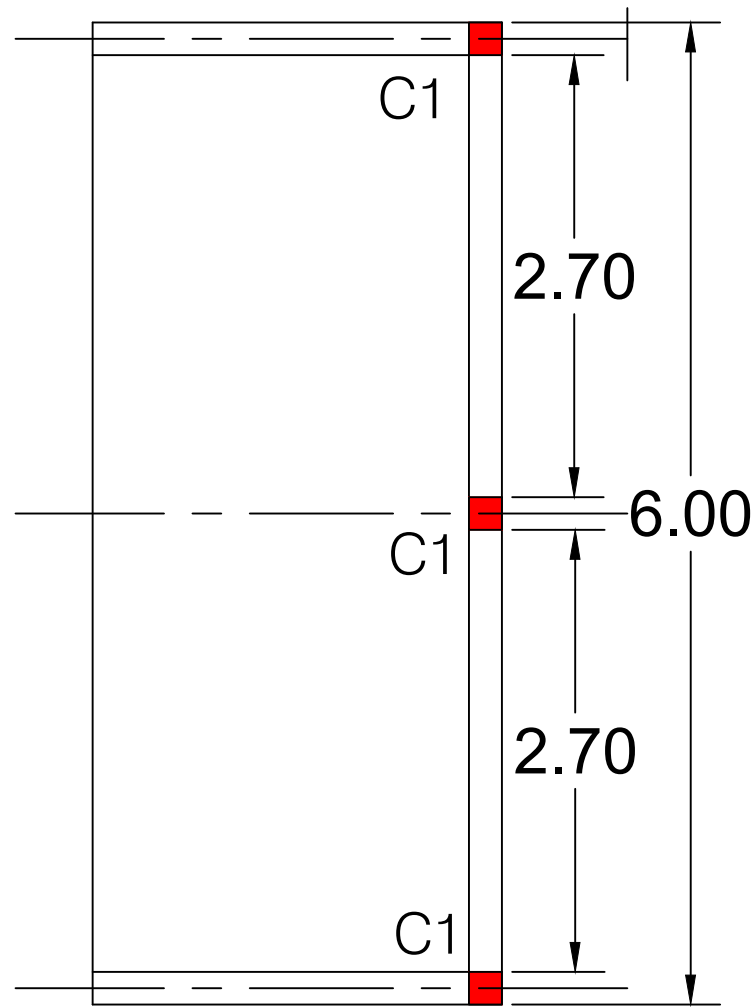
[5] GRADE OF CONCRETE : M20; GRADE OF STEEL : Fe500.



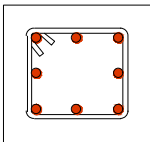
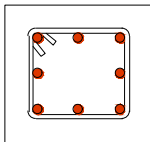
DETAILS OF TERRACE FLOOR SLAB REINFORCEMENT
(SEE FIG.-3 FOR POSITIONING AND DETAILING OF SLAB REINFORCEMENT)

NAME OF SLAB	DEPTH OF SLAB IN mm	REINFORCEMENT ALONG SHORT DIRECTION		REINFORCEMENT ALONG LONG DIRECTION		DISTRIBUTION REINFORCEMENT	SLAB TYPE
		AT MID SPAN NEAR BOTTOM FACE	OVER BEAM SUPPORT NEAR TOP FACE	AT MID SPAN NEAR BOTTOM FACE	OVER BEAM SUPPORT NEAR TOP FACE		
S1	125mm	10mm # @ 150mm C/C	10 mm # @ 150mm C/C		-	8 mm # @ 150mm C/C	1-WAY

SLAB DETAILS



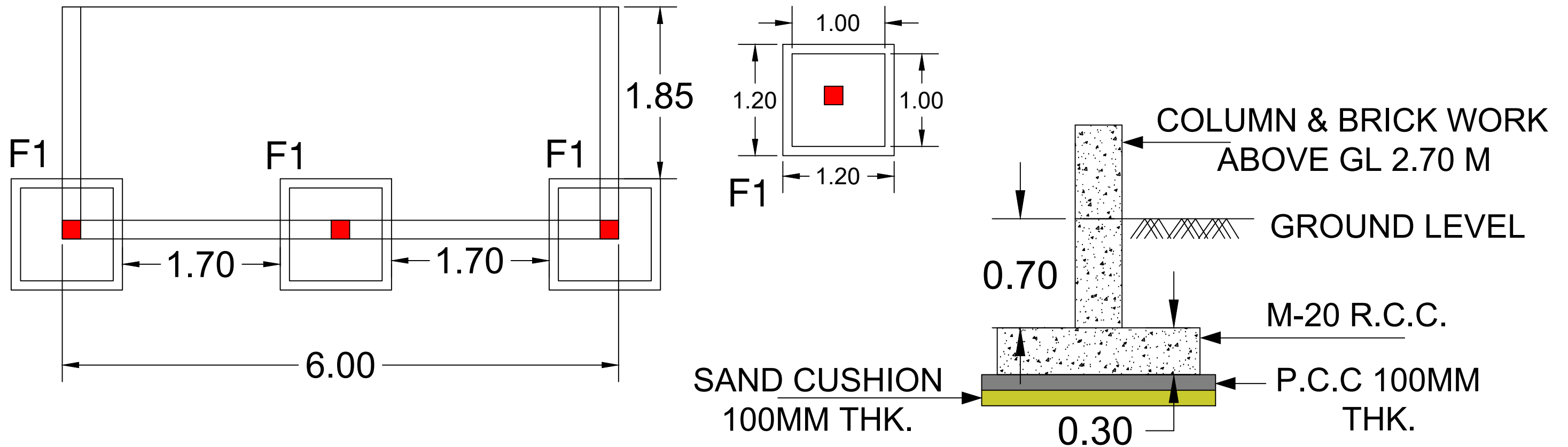
COLUMN DETAILS

COL. TYPE	COLUMN SECTION	
	UPTO PLINTH	ABOVE PLINTH
C1 200X200	 <p>MAIN BARS: 8NOS 12MM# RINGS: 8MM# 150C/C</p>	 <p>MAIN BARS: 8NOS 12MM# RINGS: 8MM# 150C/C</p>

TITLE :-

PLAN & COLUMN LAYOUT DETAILS OF
SHED EXTENSION (6.00 X 2.50 M.)

ARCHITECT & ENGINEER
NAMAN BHATT & ASSOCIATES
BESIDE MAINTENANCE OFFICE
SECTOR 10 BHILAI, DURG (C.G)
PIN - 491001
PHONE - 07882216777,9630868978
SURVEYOR



FOOTING DETAILS

SN	FOOTING NO.	FOOTING DETAILS			REINFORCEMENT DETAILS	
		L	B	D	ALONG B	ALONG L
1	F1	1200	1200	1200	T12@150 C/C	T12@150 C/C

FOOTING DETAILS

ARCHITECT & ENGINEER
 NAMAN BHATT & ASSOCIATES
 BESIDE MAINTENANCE OFFICE
 SECTOR 10 BHILAI, DURG (C.G)
 PIN - 491001
 PHONE - 07882216777,9630868978
 SURVEYOR



COL. IN ELEVATION (TYP)

TOP EXTRA AT LEFT SUPPORT

TOP R/F (THRU.)

TOP EXTRA AT RIGHT SUPPORT

STIRRUPS

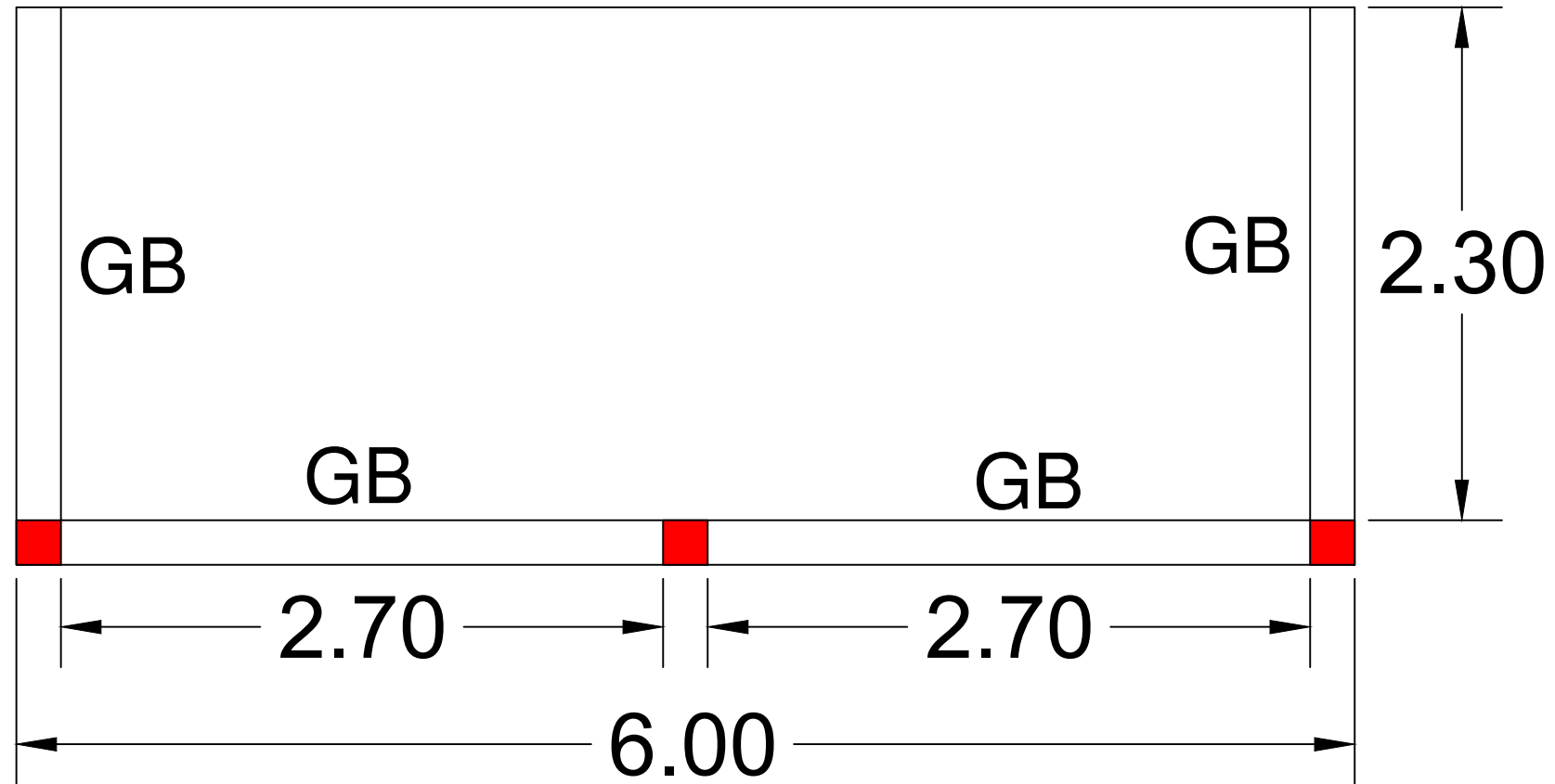
BOTTOM R/F (THRU.)

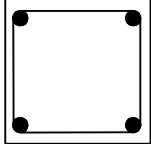
BOTTOM EXTRA R/F AT MID SPAN

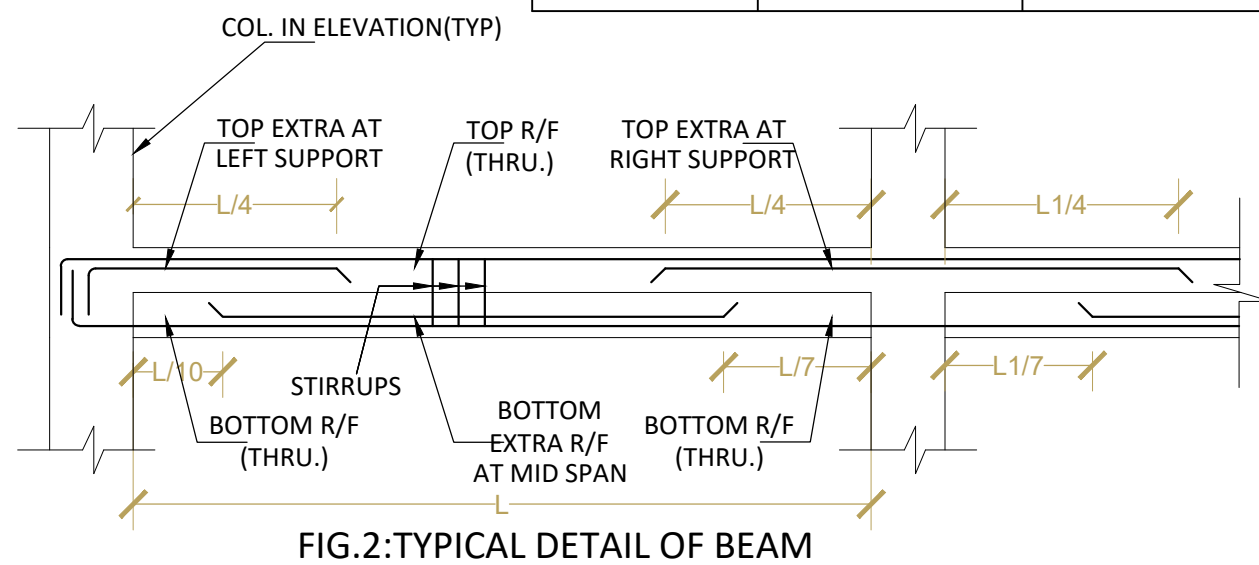
BOTTOM R/F (THRU.)

FIG.2: TYPICAL DETAIL OF BEAM

ARCHITECT & ENGINEER
NAMAN BHATT & ASSOCIATES
BESIDE MAINTENANCE OFFICE
SECTOR 10 BHILAI, DURG (C.G)
PIN - 491001
PHONE - 07882216777,9630868978
SURVEYOR



SLAB BEAM SCHEDULE						
BEAM CROSS SECTION	COLUMN SIZE	REINFORCMENT DETAILS				STIRRUPS
		TOP	MID	BOTTOM	CRANK	
	SB= 200x200 mm	2T-12 mm	-	2T-12mm	1T-10 mm	T-8mm @ 150mm c/c



SLAB BEAM DETAILS

ARCHITECT & ENGINEER
 NAMAN BHATT & ASSOCIATES
 BESIDE MAINTENANCE OFFICE
 SECTOR 10 BHILAI, DURG (C.G)
 PIN - 491001
 PHONE - 07882216777,9630868978
 SURVEYOR